



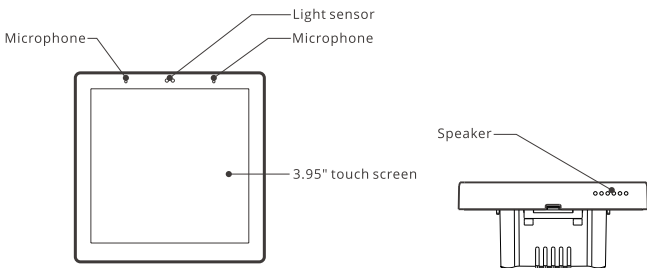
NSPanel Pro

User manual V1.0



NSPanel Pro Smart Home Control Panel

Product Introduction



⚠ The device weight is less than 1 kg. The installation height of less than 2 m is recommended.

Features

NSPanel Pro is a smart scene control panel integrating touch screen, Zigbee hub and smart security feature. You can control the devices by adding them as widgets on the panel, add various Zigbee sub-devices through the built-in Zigbee gateway, set 3 security modes to guard your home, view the live view on the panel through an added camera.



Built-in Zigbee Hub



Smart Home Control



Alarm Clock Setting



Smart Scenes



View Camera Live



Home Security



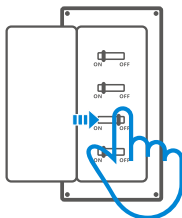
Arm/Disarm



Wallpaper Theme Switching

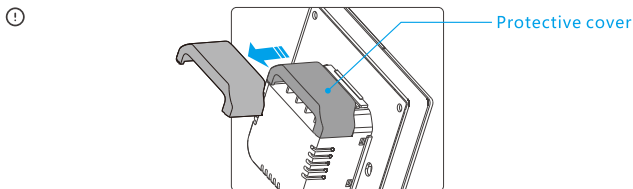
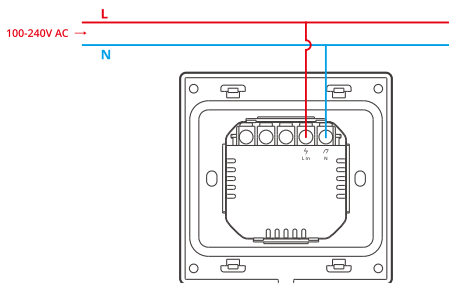
Operating Instruction

1. Power off



⚠ Please install and maintain the device by a professional electrician. To avoid electric shock hazard, do not operate any connection or contact the terminal connector while the device is powered on!

2. Wiring instruction



When the wall-mounting box is made of plastic and the size is small, the protective cover can be omitted. If your wall-mounting box is made of metal, please be sure to install it with the protective cover.

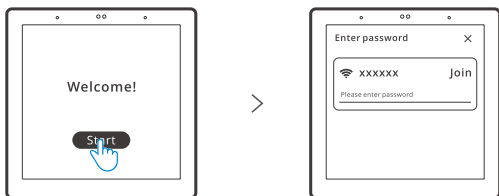
⚠ Make sure all wires are connected correctly.

3. Download the eWeLink App



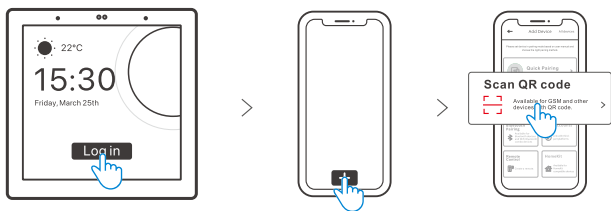
Android™ & iOS

4. Power on



After powering on, tap "Start" to select the Wi-Fi and enter the password, then you will enter the main interface by following the App prompts.

5. Log In



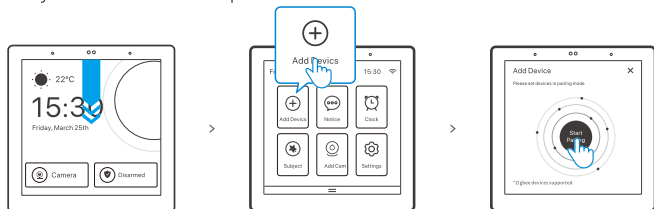
Tap "Log In" on the device and tap "+" on the eWeLink App to select "Scan QR code", then scan the QR code on the device screen by your App.

Add Zigbee devices

1. Pairing mode entry

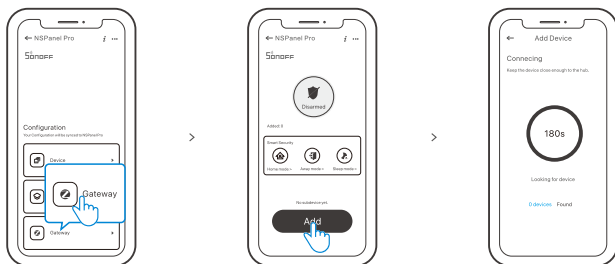
Method 1:

Entry on the central control panel



Method 2:

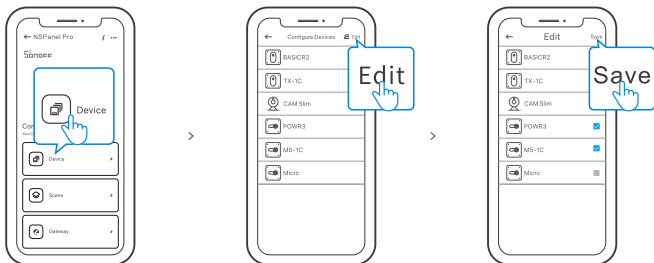
Entry on the eWeLink App



2. Set the Zigbee device into the pairing mode and complete the adding follow the prompts.

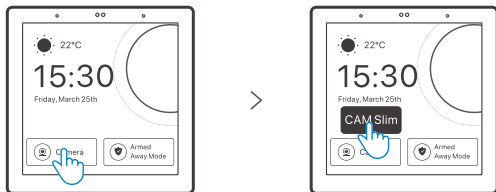
Add Wi-Fi devices

1. Add Wi-Fi devices on the eWeLink App.
2. Select "Device" on the NSPanel Pro interface of the App, sync the added Wi-Fi devices to the panel.



ⓘ After adding the devices, they can be checked and controlled on the panel.

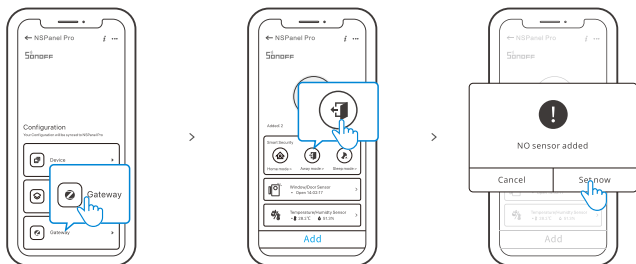
Add Camera



Add the camera on the App and configure it on the NSPanel Pro page, then tap "Camera" and select the added camera like "CAM Slim" on the panel to view the live view on the panel through the camera.

ⓘ You can also drop down the screen to select "Add camera" and add PTSP camera or DIY camera follows the prompts.

Smart Security



There are 3 modes of Smart Security, are home mode, away mode and sleep mode. Select the mode on the App to enable the triggerable sub-devices and set the alarm sound.

⚠ Smart Security can only be used after adding sub-devices

Specifications

| | |
|------------------------|------------------------------------|
| Model | NSPanel86PB, NSPanel86PW |
| Input | 100-240V AC 50/60Hz |
| Max. power consumption | 5W MAX ; 150mA |
| Screen size | 3.95" (Capacitive touch panel) |
| Screen resolution | 480 x 480 |
| Wi-Fi | IEEE 802.11 b/g/n 2.4GHz |
| Bluetooth | BT2.1+EDR , BT 3.0 , BT4.2 |
| Zigbee | IEEE 802.15.4 (Zigbee 3.0) |
| App operating systems | Android & iOS |
| Working temperature | 0°C~40°C |
| Casing material | PC V0 + CRS + Tempered glass panel |
| Product Size | 86x86x39.5mm |

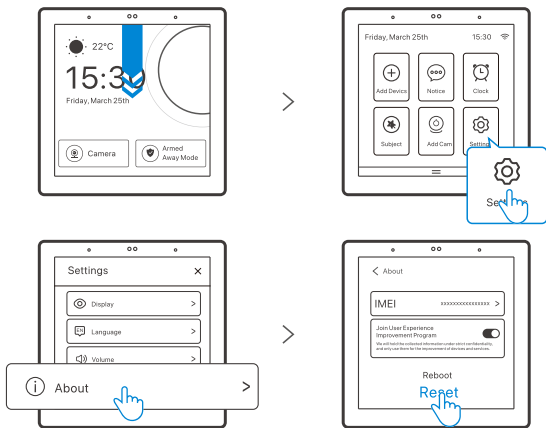
Factory Reset

Method 1:

Deleting the device on the eWeLink App indicates you restore it to factory setting.

Method 2:

Complete the factory reset follow the prompts on the panel.



Hereby, Shenzhen Sonoff Technologies Co., Ltd. declares that the radio equipment type NSPanel86PB, NSPanel86PW are in compliance with Directive 2014/53/EU. The full text of the EU declaration of conformity is available at the following internet address:

<https://sonoff.tech/usermanuals>



SONOFF

Shenzhen Sonoff Technologies Co., Ltd.

3F & 6F, Bldg A, No. 663, Bulong Rd, Shenzhen, Guangdong, China
ZIP code: 518000 Website: sonoff.tech

MADE IN CHINA

